

# COUNTY OF LOS ANGELES

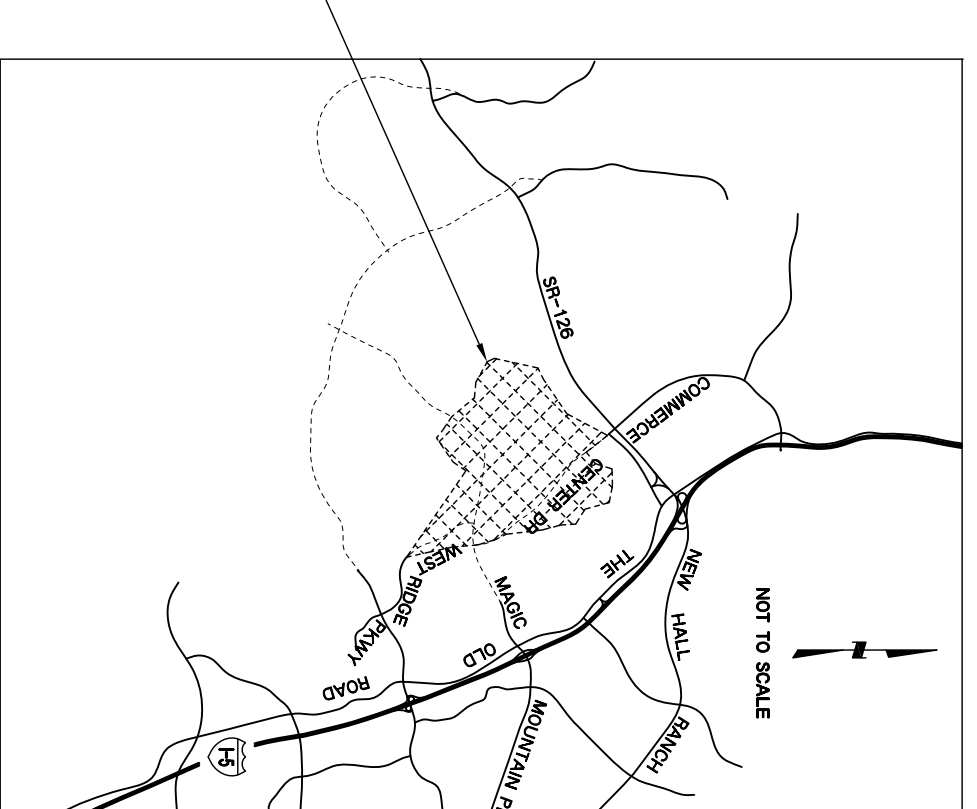
## STREET LIGHTING PLANS FOR

### MISSION VILLAGE NEW HALL

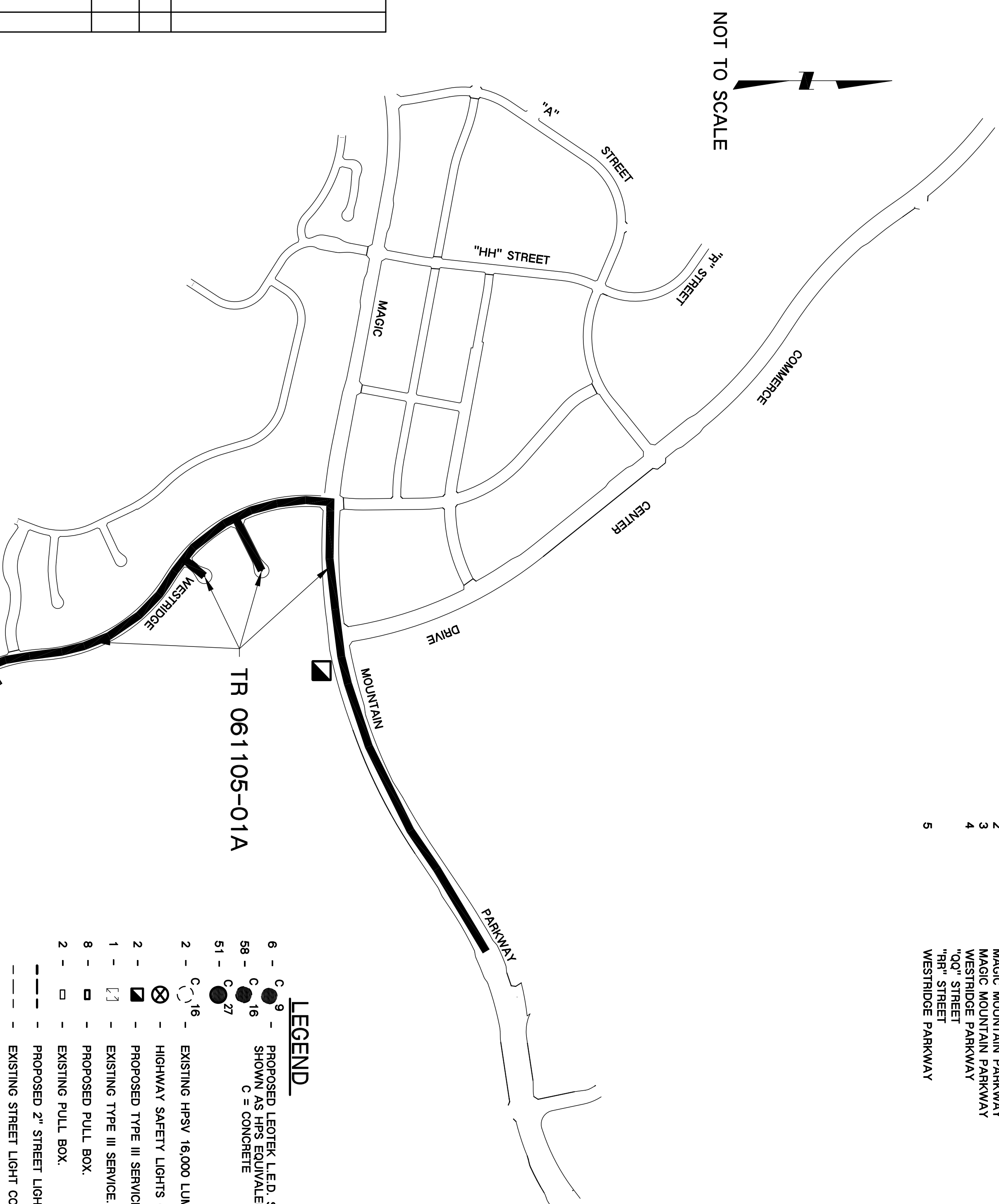
TRACT NO. 061105-01A

#### INDEX OF DRAWINGS

SHEET No.	DESCRIPTION	LOCATION
1	TITLE SHEET	
2	MAGIC MOUNTAIN PARKWAY	FROM STA. 134+10 TO STA. 149+00
3	MAGIC MOUNTAIN PARKWAY	FROM STA. 149+00 TO STA. 171+00
4	WESTRIDGE PARKWAY	FROM STA. 11+50 TO STA. 35+00
5	"RR" STREET WESTRIDGE PARKWAY	FROM STA. 35+00 TO STA. PROJECT LIMIT SOUTH



PROJECT LOCATION  
T.G. 4549



NOT TO SCALE

REVISIONS	BY	DATE	CAD FILE NAME	PROJECT	#

#### LEGEND

6 - ●	PROPOSED LEDTEK L.E.D. STREET LIGHTS, OR AGENCY APPROVED EQUAL.
58 - ●	SHOWN AS HPS EQUIVALENT.
51 - ●	C = CONCRETE
27 - ●	27 = 27,000 LUMENS
16 - ●	16 = 16,000 LUMENS
9 - ●	9 = 9,000 LUMENS
2 - C, 16	EXISTING HPSV 16,000 LUMEN LIGHT ON CONCRETE POLE.
⊗	HIGHWAY SAFETY LIGHTS (H&L). SEE TRAFFIC SIGNAL PLANS FOR DETAILS.
2 - □	PROPOSED TYPE III SERVICE.
1 - □	EXISTING TYPE III SERVICE.
8 - □	PROPOSED PULL BOX.
2 - □	EXISTING PULL BOX.
---	PROPOSED 2" STREET LIGHT CONDUIT, UNLESS OTHERWISE NOTED.
---	EXISTING STREET LIGHT CONDUIT.
---	PROJECT AREA.

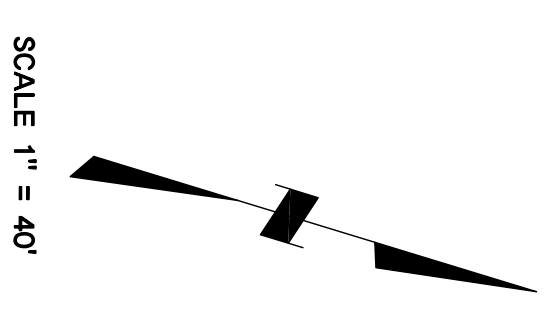
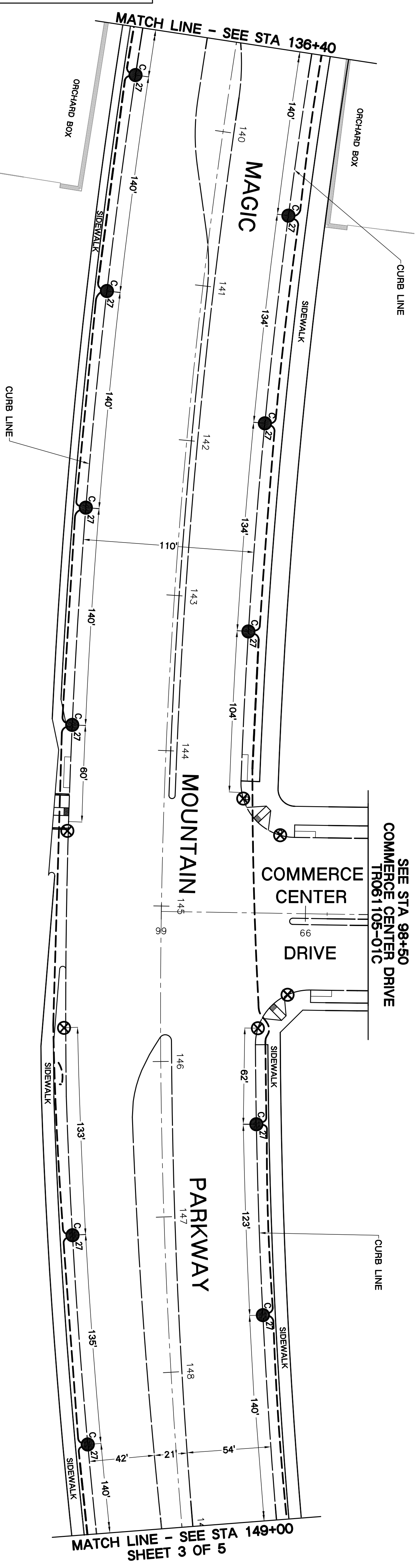
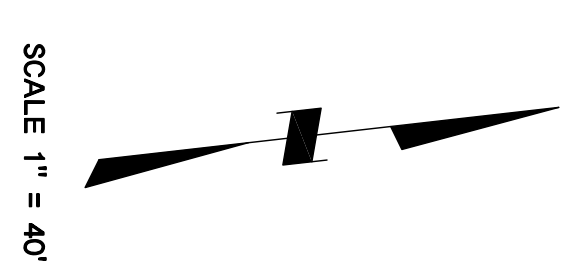
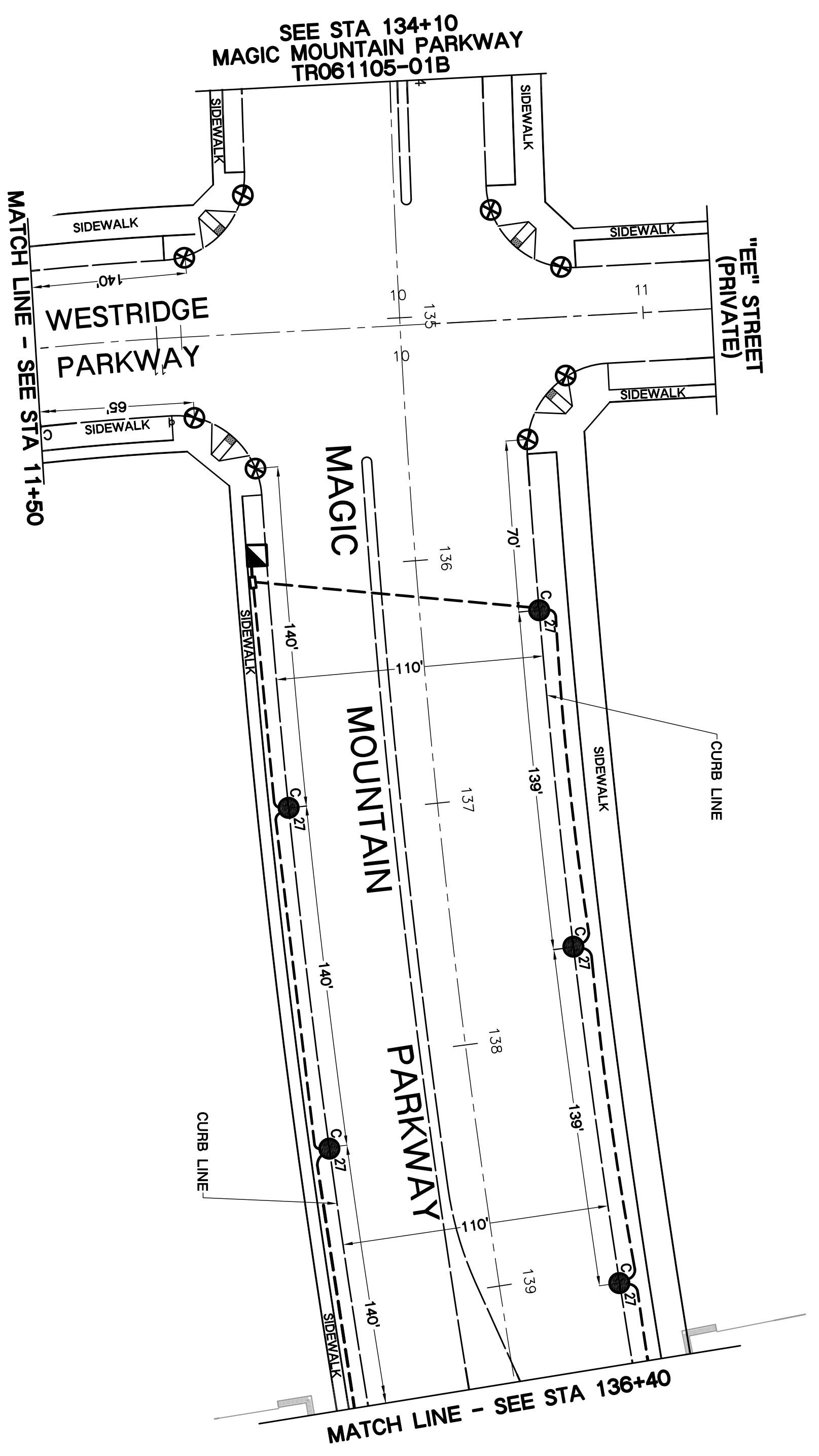
#### GENERAL NOTES FOR STREET LIGHTING PLAN

- THIS STREET LIGHTING LAYOUT EXPIRES TWO YEARS AFTER THE LATEST DATE OF APPROVAL.
- THE LOCATION OF A STREET LIGHT MAY ONLY BE ADJUSTED UP TO 10 FEET. ONLY TO AVOID AN OBSTRUCTION SUCH AS A CATCH BASIN, DRIVEWAY, ETC. ANY DEVIATION EXCEEDING 10 FEET MUST HAVE THE APPROVAL OF THE COUNTY OF LOS ANGELES DEPARTMENT OF PUBLIC WORKS. STREET LIGHTING SECTION, IF SUCH APPROVAL IS NOT OBTAINED, THE LIGHTS PROPOSED BY THIS PLAN WILL NOT BE ACCEPTED BY COUNTY LIGHTING MAINTENANCE DISTRICT.
- A REVISED STREET LIGHTING LAYOUT SHALL BE SUBMITTED FOR ANY CHANGES IN THE MAP, SUCH AS STREET ALIGNMENT, LOT OR PARCEL SIZES, BOUNDARIES, ETC.
- THE STREET LIGHT POLES SHALL BE AMERON TYPE 1-C1 SERIES OR AGENCY APPROVAL EQUAL.
- ALL STREET LIGHT WIRING SHALL BE UNDERGROUND.
- ON STREETS WHERE THE SIDEWALK AND CURB ARE GREATER THAN 5' FEET IN WIDTH, THE MAST ARMS AND BRACKETS SHALL BE PERPENDICULAR TO THE CURB FACE. THE STREET LIGHTING ELECTRODOLER STANDARDS SHALL BE PLACED 24" FROM THE CURB FACE. USE A 4-FOOT LONG MAST ARM FOR 100 WATT LAMPS AND 6-FOOT LONG MAST ARM FOR OTHER WATTAGE. UNLESS OTHERWISE SPECIFIED.
- ON STREETS WHERE THE SIDEWALK AND CURB ARE LESS THAN OR EQUAL TO 5' FEET IN WIDTH, THE STREET LIGHTING ELECTRODOLER STANDARDS AND PULL BOXES SHALL BE PLACED OUTSIDE OF THE SIDEWALK AREA UNLESS OTHERWISE SPECIFIED. USE AN 8-FOOT LONG MAST ARM FOR ALL WATTAGE. UNLESS OTHERWISE SPECIFIED.
- ALL LIGHTS SHOWN ON THIS LAYOUT SHALL BE ENERGIZED PRIOR TO ACCEPTANCE OF THE LIGHTING SYSTEM TO A COUNTY LIGHTING DISTRICT.
- EXISTING STREET LIGHTING SYSTEM SHALL REMAIN IN OPERATION DURING ANY MODIFICATION. ANY PROPOSED TEMPORARY STREET LIGHTING SYSTEM MUST BE APPROVED BY THE LOS ANGELES COUNTY DEPARTMENT OF PUBLIC WORKS.
- FIVE-FOOT CLEARANCE TO BE MAINTAINED FROM FIRE HYDRANT.
- FOUR-FOOT CLEARANCE TO BE MAINTAINED FROM TOP OF SLOPE AT COMMERCIAL DRIVEWAY. AND 2 FOOT CLEARANCE FROM RESIDENTIAL DRIVEWAY.
- WARNING: SAFETY CLEARANCE SHALL BE OBTAINED DAILY FROM THE SERVING COMPANY BEFORE DOING ANY WORK OR MAKING ANY CONNECTIONS ON AN EXISTING CIRCUIT.
- MULTIPLE CIRCUIT WIRE SHALL BE NO. 6 AWG STRANDED COPPER CONDUCTOR, TYPE THHW/THHN INSULATION, UL APPROVED FOR 600 VOLT OPERATION UNLESS OTHERWISE SPECIFIED HEREON.
- THREE WIRES (COLOR CODE: 1-RED, 1-BLACK, 1-WHITE) SHALL BE INSTALLED IN ALL MULTIPLE CIRCUIT CONDUIT UNLESS OTHERWISE PROVIDED FOR HEREON.
- EVEN NUMBERED ELECTRODOLERS SHALL BE CONNECTED TO RED AND WHITE WIRES AND ODD NUMBERED ELECTRODOLERS SHALL BE CONNECTED TO BLACK AND WHITE WIRES.
- ELECTRODOLERS SHALL BE WIRED PER TYPICAL MULTIPLE CIRCUIT ELECTRODOLER WIRING DETAIL.
- MULTIPLE CIRCUITS IN CONDUITS CONTAINING MORE THAN THREE CONDUCTORS SHALL BE APPROPRIATELY IDENTIFIED BY LABELING CONDUCTORS "A", "B", "C", ETC. WITH APPROVED SELF-LAMINATING LETTER TAPE WRAPPED AT LEAST TWICE AROUND THE CONDUCTOR IN EACH PULLBOX. (W.H. BRADY, SPECIAL SELF-LAMINATING WIRE MARKERS OR EQUIVALENT)

100% COUNTY OF LOS ANGELES

<p>PREPARED BY: <b>ADVANTPC Consulting Engineers</b> Traffic &amp; ITS + Communications + Civil + Electrical</p> <p>21700 Copley Drive, Suite 350 Diamond Bar, CA 91765</p> <p>Tel: (909) 860-6222 Fax: (909) 860-6722 www.advantpc-usa.com</p> <p>DATE: 02/27/2015</p>	<p>REVIEWED: COUNTY OF LOS ANGELES</p> <p>BY: _____ DATE _____</p> <p>RECOMMENDED: COUNTY OF LOS ANGELES</p> <p>BY: _____ DATE _____</p> <p>APPROVED: GAIL FABER, DIRECTOR OF PUBLIC WORKS</p> <p>BY: _____ DATE _____</p> <p>ASSISTANT DEPUTY DIRECTOR</p>	<p>COUNTY OF LOS ANGELES DEPARTMENT OF PUBLIC WORKS TRAFFIC AND LIGHTING DIVISION</p> <p>STREET LIGHTING PLAN</p> <p>TR 061105-01A</p>
---	---	--

THIS PLAN IS ACCURATE FOR PROPOSED WORK ONLY  
T.G. 4549



- LEGEND**
- ⊗ - HIGHWAY SAFETY LIGHTS (HSL). SEE TRAFFIC SIGNAL PLANS FOR DETAILS.
  - 1 - □ - PROPOSED TYPE III SERVICE.
  - 1 - □ - PROPOSED PULL BOX.
  - - PROPOSED 2" STREET LIGHT CONDUIT, UNLESS OTHERWISE NOTED.
- 16 - C 27 - PROPOSED LEOTEK L.E.D. STREET LIGHTS, OR AGENCY APPROVED EQUAL, SHOWN AS HPS EQUIVALENT.  
 C = CONCRETE  
 27 = 27,000 LUMENS  
 22 = 22,000 LUMENS  
 16 = 16,000 LUMENS  
 9 = 9,000 LUMENS

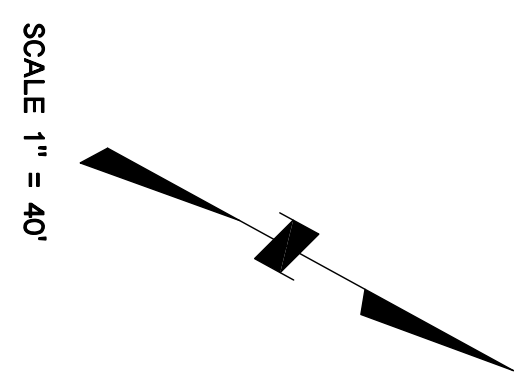
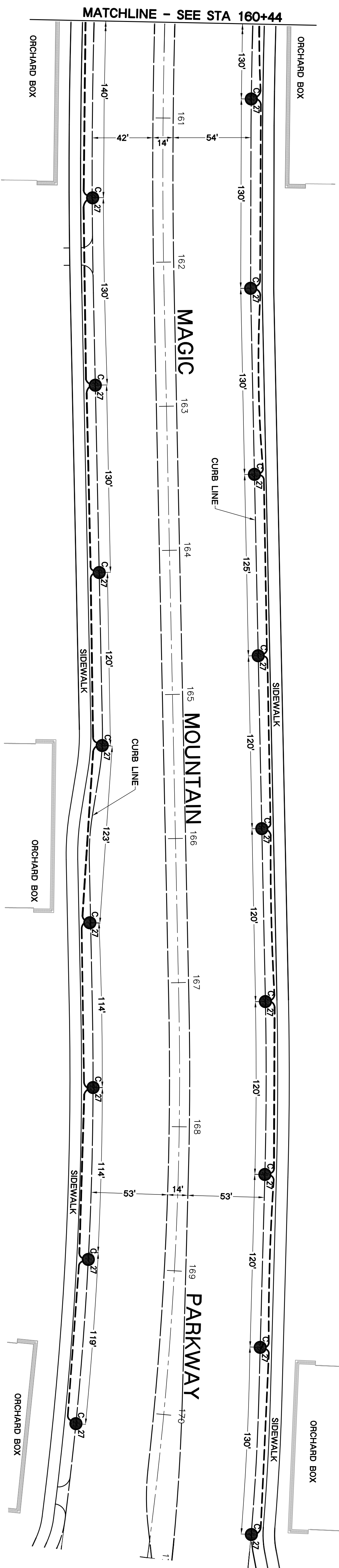
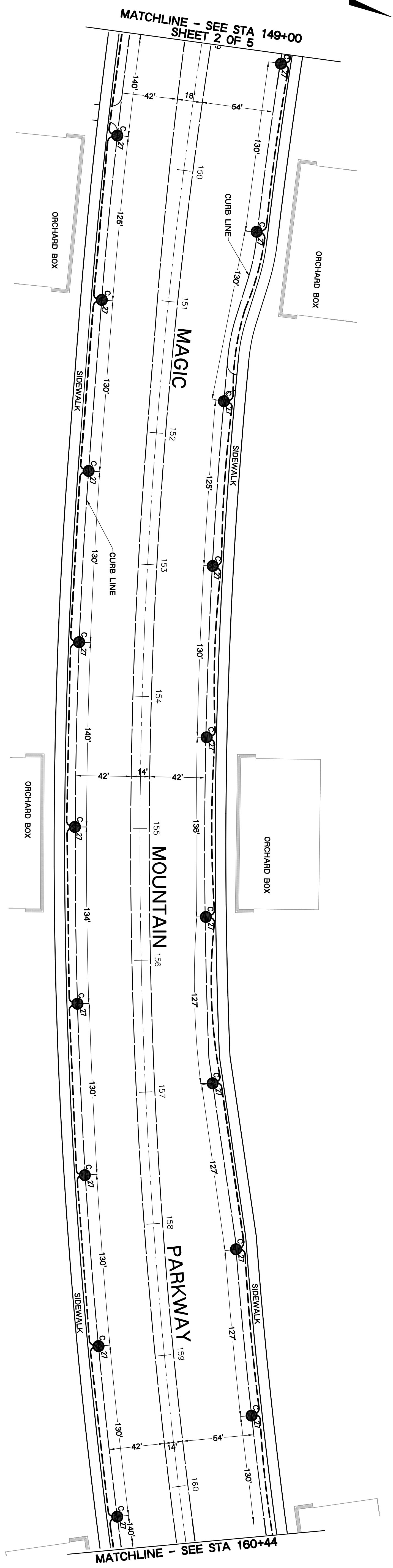
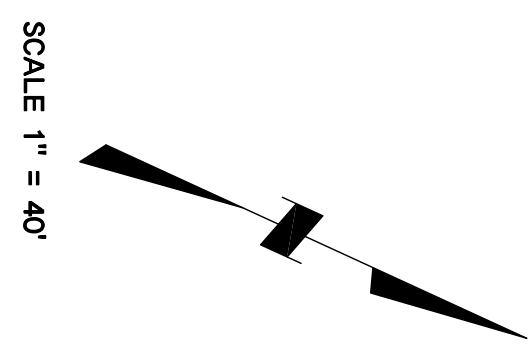
REVISIONS	BY	DATE	CAD FILE NAME	PROJECT	#

**THIS PLAN IS ACCURATE FOR PROPOSED WORK ONLY**

**T.G. 4549-J3**

<p>ADANTEC Consulting Engineers Traffic, PLS &amp; Communications &amp; Civil &amp; Electrical</p> <p>21700 Copley Drive, Suite 350 Diamond Bar, CA 91765</p> <p>Tel: (909) 860-6222 Fax: (909) 860-6722 www.adantec-usa.com</p>	PREPARED BY: _____ DATE: 02/27/2015	REVIEWED: _____ COUNTY OF LOS ANGELES DATE: _____	COUNTY OF LOS ANGELES DEPARTMENT OF PUBLIC WORKS TRAFFIC AND LIGHTING DIVISION STREET LIGHTING PLAN <b>MAGIC MOUNTAIN PARKWAY</b> <b>FROM STA. 134+10 STA 149+00</b>
	APPROVED: _____ DATE: _____ OAL FABER, DIRECTOR OF PUBLIC WORKS	BY: _____ COUNTY OF LOS ANGELES DATE: _____	

100% COUNTY OF LOS ANGELES



**LEGEND**

35 - C 27 - PROPOSED LEOTEK L.E.D. STREET LIGHTS, OR AGENCY APPROVED EQUAL, SHOWN AS FPS EQUIVALENT.  
 C = CONCRETE

27 = 27,000 LUMENS  
 22 = 22,000 LUMENS  
 16 = 16,000 LUMENS  
 9 = 9,000 LUMENS

--- PROPOSED 2" STREET LIGHT CONDUIT, UNLESS OTHERWISE NOTED.

REVISIONS	BY	DATE	CAD FILE NAME	PROJECT	#

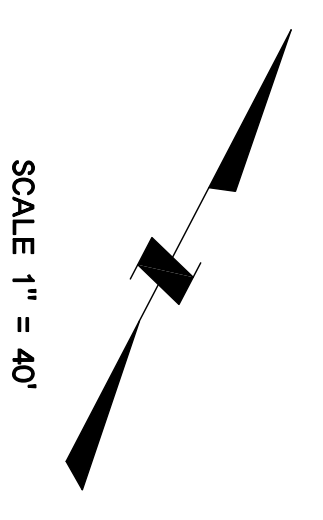
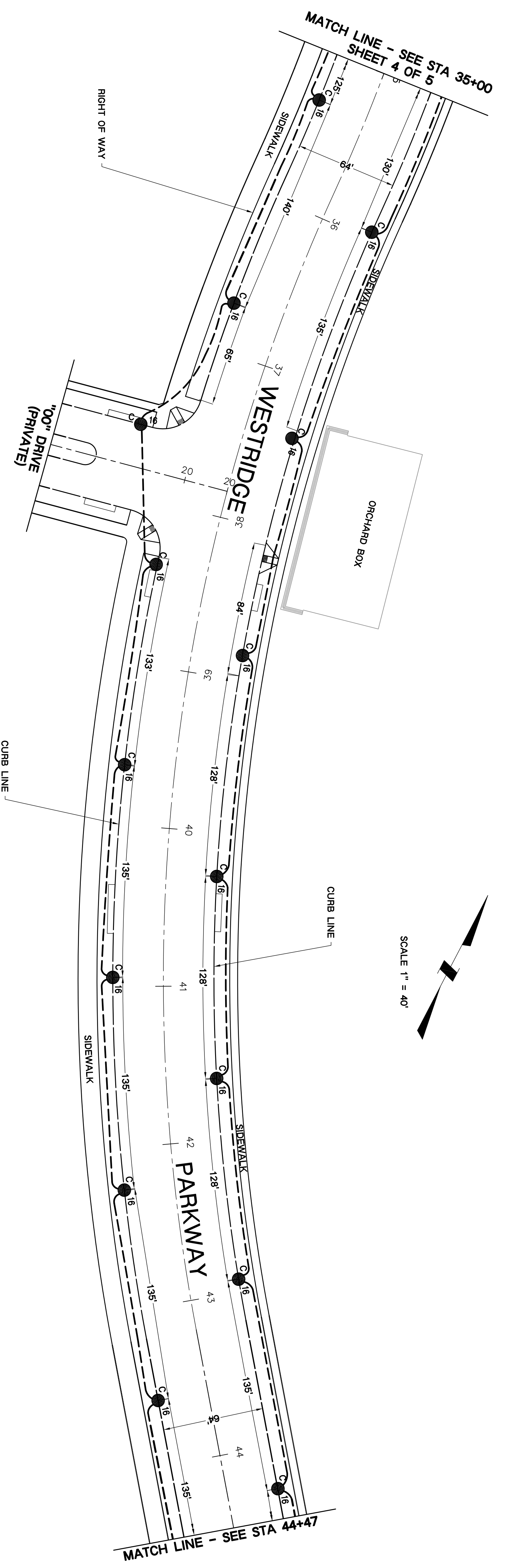
DESIGNED BY	LT
DRAWN BY	LT
CHECKED BY	
APPROVED BY	
REVIEWED BY	
DATE	

THIS PLAN IS ACCURATE FOR PROPOSED WORK ONLY  
 T.G. 4549-J3

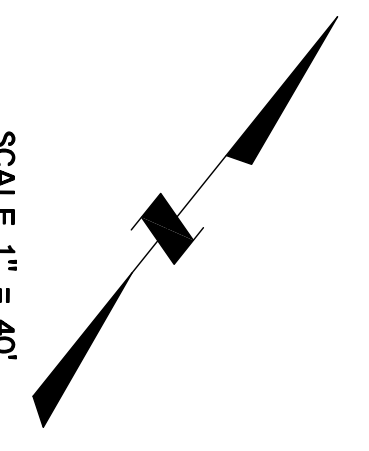
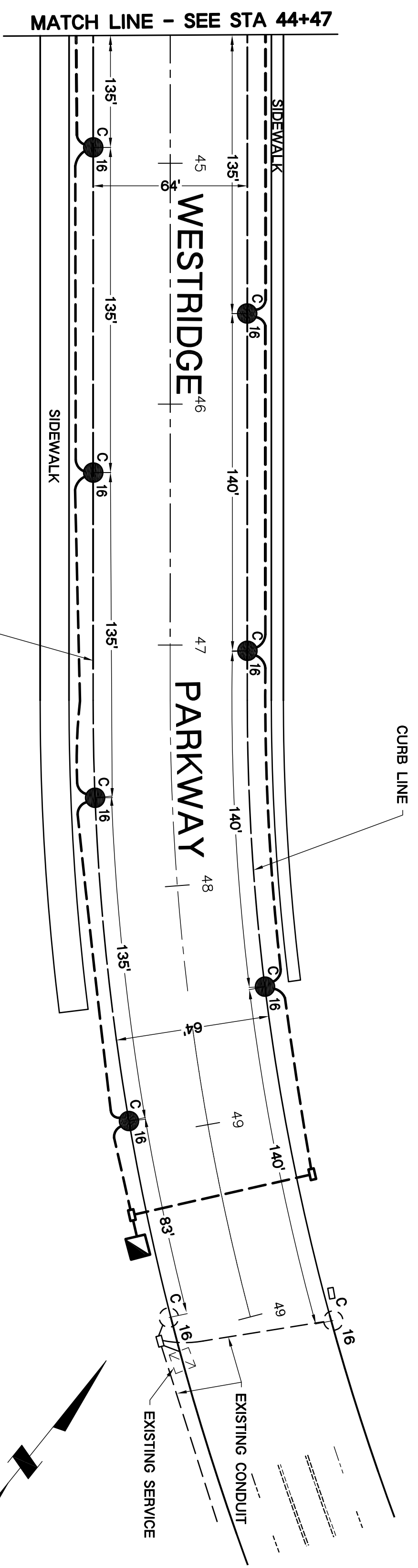
<p>ADANTEC Consulting Engineers          Traffic, PLS &amp; Communications &amp; Civil &amp; Electrical</p> <p>21700 Copley Drive,          Suite 350          Diamond Bar, CA 91765</p> <p>Tel: (909) 860-6222          Fax: (909) 860-6722          www.adantec-usa.com</p>	PREPARED BY: _____ DATE: 02/27/2015	REVIEWED: _____ DATE: _____ COUNTY OF LOS ANGELES	COUNTY OF LOS ANGELES DEPARTMENT OF PUBLIC WORKS TRAFFIC AND LIGHTING DIVISION STREET LIGHTING PLAN <b>MAGIC MOUNTAIN PARKWAY</b> <b>FROM STA. 149+00 STA 171+00</b>
	APPROVED: _____ DATE: _____ OAL FABER, DIRECTOR OF PUBLIC WORKS	BY: _____ DATE: _____ COUNTY OF LOS ANGELES	
TRB81106-01A		SH: 3 OF 5	SCALE: 1" = 40' G.D. 3835

100% COUNTY OF LOS ANGELES





SCALE 1" = 40'



SCALE 1" = 40'

REVISIONS	BY	DATE	CAD FILE NAME	PROJECT	#

- LEGEND**
- 22 - C 16 - PROPOSED LEOTEK L.E.D. STREET LIGHTS, OR AGENCY APPROVED EQUAL, SHOWN AS HPS EQUIVALENT.
  - 27 = 27,000 LUMENS
  - 16 = 16,000 LUMENS
  - 9 = 9,000 LUMENS
  - C = CONCRETE
  - 2 - C 16 - EXISTING HPSV 16,000 LUMEN LIGHT ON CONCRETE POLE.
  - 1 - [ ] - PROPOSED TYPE III SERVICE.
  - 1 - [ ] - EXISTING TYPE III SERVICE.
  - 2 - [ ] - PROPOSED PULL BOX.
  - 2 - [ ] - EXISTING PULL BOX.
  - - PROPOSED 2" STREET LIGHT CONDUIT, UNLESS OTHERWISE NOTED.
  - - EXISTING STREET LIGHT CONDUIT.

PREPARED BY: **ADVANTAGE Consulting Engineers**  
 Traffic + ITS + Communications + Civil + Electrical  
 21700 Copley Drive, Suite 350, Diamond Br., CA 91765  
 Tel: (909) 880-6222, Fax: (909) 880-6722, www.advantec-usa.com

REVIEWED: COUNTY OF LOS ANGELES  
 BY: \_\_\_\_\_ DATE \_\_\_\_\_  
 RECOMMENDED: COUNTY OF LOS ANGELES  
 BY: \_\_\_\_\_ DATE \_\_\_\_\_  
 APPROVED: GALE FARRER, DIRECTOR OF PUBLIC WORKS  
 BY: \_\_\_\_\_ DATE \_\_\_\_\_  
 ASSISTANT DEPUTY DIRECTOR

100% COUNTY OF LOS ANGELES  
 COUNTY OF LOS ANGELES  
 DEPARTMENT OF PUBLIC WORKS  
 TRAFFIC AND LIGHTING DIVISION

STREET LIGHTING PLAN  
 WESTRIDGE PARKWAY  
 FROM STA. 35+00 TO PROJECT LIMIT SOUTH

DATE: 02/27/2015  
 SHEET: 5 OF 5  
 SCALE: 1" = 40'  
 C.D. 3836

T.G. 4549-H3